



The QUACKER

FEBRUARY, 2009, ISSUE 312 SPONSORED BY THE SUGAR ISLAND LIONESS CLUB



Happy Valentine's Day

LIONESS NEWS

It is final; our Gigantic Food Basket Raffle raised \$398 which was donated to the Diane Peppler Resource Center. Lioness Wanda shared that she and Harold donated many of the food items to the Resource Center as well. Thank you to Lionesses Gayle and Dorothy for their effort in seeking out the best food bargains for the basket. Also a big thank you goes to the Sugar Island residents who, once again, so generously support us and our charities.

The Lions and Lionesses were honored to provide the family and friends of Lorraine Carpentier with a funeral dinner on January 2. Many of us showed up with our favorite dishes and to extend our sympathies to her family. She will be missed.

Even though we didn't have a lot of pressing business at our January meeting, our lively discussions continued longer than normal. I know it was because we were enjoying each other's company and did not want to go back out to cold cars and scrap off 2" of newly fallen snow.

Some of these business discussions focused on the new island phone directory and our appreciation for Mary Ann Biscorner Dick. She is nearly complete with the first draft. The directories will again sell for \$4.00 and a business card size ad will cost \$30. I will be sending out letters selling ad space. Please let me know if your business or a business you patronize would like to support the island while reaching 600 people continuously for the next three years. It's a great deal. We also voted to give additional funds to the Hearthside Assisted Living. And we will be baking pasties on May 11, and 12, for our next sale. Be sure and mark that on your calendars.

Special birthday wishes go to Lionesses Teresa Brennan, Judy Colein, Ellen Parlmer, Connie Smithling and Jean Willis. Connie has the special Valentine birthday. Enjoy! Also special Valentine wishes to all the island residents and snowbirds.

Linda Beaumont, Sugar Island Lioness Secretary



COMMUNITY CALENDAR

- 2. Groundhog Day, Early Spring???
 - 4. Fire Training
 - 5. Lioness Club 1:00pm
 - 8. Red Hats, Applebee's 1:00pm sign-up
 - 10. Township Board 7:00pm
 - 11. Planning Commission 7:00pm
 - 12. Lions Den 6:30pm
 - 14. Valentine's Day (Don't forget!)
 - 14. Valenine Dinner 4-7pm (CSB)
 - 15. Lions Brunch 8:30-11:30am
 - 18. Fire Training
 - 21. QUACKER DEADLINE
 - 24. Township Bd. 7:00pm (special)
- MARCH 1st Quacker Distributed



LIONS DEN

As I sit in my front room composing the "Lions Den" article I can look over the St. Mary's River, it's completely frozen over now for a week or two. The Locks closed down yesterday (Jan 15) until the middle of March, so no more freighter activity to watch for a while.

At our last meeting, we had a long discussion concerning the cost of our Sunday Brunch. Most winter months it is not a "fund raiser", it is more like a "fun raiser" (Lion members always have a good time when we get together). We did not want to raise the price of the Brunch, so we will have a 50/50 raffle each Sunday. The drawing will be at 11:00am and the winner will be contacted at that time. As it turned out our first winner is—Bill Smith of Grand Rapids. Bill and his wife are visiting Bob and Linda Beaumont. Because of Bill's encounter with the Sugar Island Ambulance Corp he donated his winnings of \$25 to the Corp. "Way to go Bill"!

The January winners of our regular raffle are: Millie Polley, Angie Fischer and Kathleen Favorite.

This is off Lions Club business, but I would like to say something about our FIRE DEPT. They have training on the first (north end) and the third (south end) Wednesdays of the month. Last Wednesday we took the pumper and tanker to the ferry parking lot, laid out hose lines and pumped water. When the tanks were empty, the hoses (with a little bit of ice) were put away and the vehicles were moved to the "pump house" by the ferry to fill the tanks. Does this sound crazy being in the dark in freezing weather? Well, maybe, but it's the only way to find out if we can work in the dark in these conditions. We are always looking for a few good people, there is a job for everyone regardless of age, sex or ability.

A couple of outstanding members of the Club have a birthday in February and they are: Greg Armstrong and Jim Handziak. I think February will be nice and warm just for them!

Leo Rich, Secretary



TOWNSHIP TALK

I would like to start by saying Thank-You to the old board member's for all of years of service. Now there might be rumor's swaying in the wind of the new board, and I would like to invite anyone and everyone to our next board meeting to learn the truth. There is a lot of room for public comment. The new board is currently working on accessing all parts of the township. This term we have two new trustee's Mrs. Snider and Mr. Biron. Mrs. Snider's duties involve Fire, Ambulance, and also represent the senior's. She can be reached at 632-1772 for any questions or concerns. Mr. Biron's duties involve building, building grounds, and solid waste. He can be reached at 635-1033 for any questions or concerns. At the January meeting we had a wide variety of topic's some to include but not limited to snowplowing bids (table until next meeting), fire certification, updates, deputy hours, zoning administration, garbage disposal, board of review training, road commission update, and also I would like to say thank you to Leo Riche and Debbie Fox with the CSB Board for there hard work on the music fest, and for generating a check for \$3,569.00. (This is the group that is mostly if not entirely responsible for the 8 Mile park). Also congratulation to the new Board of Review, Bob Colein, Max Cox, Louise Bledsoe, and alternate Richard Fisher. Last but not least I like to thank Derrick for the willingness to work with me in the transformation period.

Eric McKerchie, Supervisor



SUGAR ISLAND CHESS CLUB

The Sugar Island Chess Klub was founded in 2006 and continues to provide an opportunity for Sugar Island residents and friends to play chess at no cost. It is not a traditional chess "club" since we have no membership list and are open to all. The largest turnout of players probably occurred in 2006, when we first started putting out chess boards on Thursday nights. It was easier then, with more people participating, to match a player against someone with a similar skill level. Even with fewer players, we try to keep it interesting--often by playing with partners. It's best when the games are challenging--but not too challenging. So, if you have a friend who plays or wants to learn how, please bring him or her along--no matter what skill level. "The more, the merrier" as they say. And if you have any comments or suggestions, let us know. We hope to see you soon.

Glen Schmiede



NEW PHONE DIRECTORY

It's hard to believe, but it has been three years since we printed our last phone and address directory. During this time there has been plenty of changes and the Lioness Club plans to publish a new one in May, 2009. If you know of changes contact Harold Mohr at 635- 0154 or Louise Willis 635-3152 Deadline for changes is Mar 31, 2009.



BAYLISS PUBLIC LIBRARY

Feb. 3, 6:30 p.m., Cabin Fever Writers' Group, open to the public, Bayliss Public Library, 541 Library Drive. Call Jillena at 635-2228 for more information.

Feb. 5, AARP Tax-Aide starts, free tax help for seniors and low-to-middle income taxpayers, at Bayliss Public Library, 541 Library Drive. Call 647-7362 to make an appointment.

Feb. 5, 7 p.m., Author Cheryl Lanning from Drummond Island will speak at Bayliss Public Library about her new novel "Quest." Free to the public. Her books will be available for purchase and signing. Refreshments provided. Bayliss Public Library, 541 Library Drive, 632-9331.

Feb. 10, 6:30 p.m., FILM@Bayliss, "In Love We Trust" (Drama, China). Free to the adult public. Bayliss Public Library, 541 Library Drive, 632-9331. A divorced couple learns that the only way to save their daughter, who suffers from a blood disease, is to have another child. Now, both remarried, the couple is forced to test their love and their commitment to one another by putting their current relationships in danger.

Feb. 12, 3 p.m., Classic Film Series, "The Philadelphia Story" (1940), free to the public. Popcorn by donation. Bayliss Public Library, 541 Library Drive, 632-9331.

Feb. 19, 6:30 p.m., Cabin Fever Writers' Group, open to the public, Bayliss Public Library, 541 Library Drive. Call Jillena at 635-2228 for more information

Feb. 21, 1 p.m., Family Movies @ Bayliss, "Homeward Bound: The Incredible Journey," free movie, popcorn by donation, Bayliss Public Library, 541 Library Drive, 632-9331.

Feb. 24, 7 p.m., Sierra Club Three Lakes Group, "Oil on Ice" film, an intimate portrayal of the native Gwich'in Indians preventing invasive oil operations in the Arctic National Wildlife Refuge's fragile caribou calving grounds. Free to the public, refreshments provided. Bayliss Public Library, 541 Library Drive, 632-9331.

Feb. 26, 7 p.m., Claudia Schmidt in Concert, Folk music free to the public. Her CDs will be available for purchase and signing. Refreshments provided. Bayliss Public Library, 541 Library Drive, 632-9331.



VARIOUS & SUNDRY!



Did you know that 2009 is the year of the Lincoln Bicentennial? Below are some fun facts about Abraham Lincoln:

- * The Lincoln family dog's name was Fido.
- * Grace Bedell, an 11 year old girl suggested that Lincoln grow a beard.
- * Abraham Lincoln carried letters, bills and notes in his famous stovepipe hat.
- * He helped start the Republican Party
- * He worked as a store clerk, rail splitter and lawyer before becoming president.

www.lincolnbicentennial.gov



FREE TAX HELP

You may sign up for free tax help at Bayliss Public Library by calling 647-7362. Appointments will start in February and continue until the tax deadline in April. Volunteers from AARP Tax-Aide will again help prepare income tax returns for elderly and low-to-middle-income taxpayers. For more information you may call 1-888-227-7669 or visit their website at www.aarp.org/taxaide. The library will have Federal and Michigan tax forms available by the end of January.



FACT FILE

Lion	Panthera leo
Size	48" at the shoulder
Weight	330-500 pounds
Life Span	10-13 years
Habitat	Grassy Plains and open woodlands

Few animals embody the soul of Africa as does the "King of Beasts."

Lions once ranged from Greece through the Middle East to northern India, and most parts of Africa. Today lions survive only in sub-Saharan Africa. They have declined by 23% in the last 20 years, to just 23,000.

Lions live in a complex social group called a "pride," that consists of a dominant male, 5-10 females and cubs and 2-3 male pride mates.

AFRICAN WILDLIFE FOUNDATION



Why didn't Noah catch any fish?
He only had two worms and couldn't use either one!
Capt' Joe

Little Traverse Conservancy



Announces Winter Field Trip

The following Little Traverse Conservancy field trip is offered at no charge, but *pre-registration is required by calling 231.347.0991*

Saturday February 7, 2009

All Day Birding Adventure

Eastern U.P. and Sugar Island

A short ferry ride from downtown Sault Ste Marie, Sugar Island is situated on the St. Mary's River and lies within an important migratory flyway. In the wintertime, it is an excellent place to look for Great Grey Owls, Snow Buntings, and winter finches. Leaving from Harbor Springs, we'll take the scenic route to the Sault, birding along the way. On the island, we'll snowshoe into the Bailey-Lagerstrom Preserve and visit the shoreline. This will be an all-day event (please bring your own lunch), with options to join the trip in Harbor Springs, Alanson, Sault Ste Marie, or on Sugar Island. Ask about carpooling when you register at 231.347.0991.



ARE YOU HAVING A SUPER BOWL PARTY OR AN INVITED GUEST? HERE'S A GREAT RECIPE FOR A DELICIOUS EASY DIP!

"Cheesy Spinach and bacon dip"

- 1 pkg. frozen, thawed and drained chopped spinach
- 1 lb. (16 oz.) Velveeta Pasteurized cheese cut into cubes
- 4 oz. Philadelphia cream cheese cubed
- 1 can (10 oz) diced tomatoes and green chilies, undrained
- 8 slices bacon, crisply cooked, crumbled

Combine ingredients in microwaveable bowl. Microwave on high 5 minutes or until cheese is completely melted and mixture is well blended, stirring after 3 minutes. Serve with tortilla chips and cut-up vegetables.

Kraft Food & Family





JHON WHITESIDE
 Corner 6 Mile & Mackinaw Tr.
 (906) 635-8000 (906) 635-4700

SOO COLLISION, INC.
 Your collision Experts Over 20 Years Experience
 (906) 635-4700 10971 South Mackinaw Trail
 Special Perks for Sugar Islanders
 Jhon Whiteside



Weekly events starting at 6:30
 Sunday's - Pool Tournaments
 Thursday—Chess Tournament
 Tuesday—Euchre Tournament
 Lunch and diner served daily from
 10:00am—9:00pm

HILLTOP BAR

Tel: 906-635-1212

LOCATED AT 5389 E. 1 1/2 mile road
PROPANE FILLING STATION

TRANSFER STATION
NORTH END HOURS
 Sunday, Tuesday, Thursday & Saturday 7am-3pm
SOUTH-END HOURS
 CLOSED FOR THE WINTER

McKERCHIE CONTRACTING
 Residential Builder Pole Barns Septic
 Systems Landscaping Sand Gravel Snow
 Removal
 Permits Dredging Seawalls Docks
 6793 E. McKerchie Tr.
 Eric McKerchie
 Sault Ste. Marie, Mi. 49783 (906)632-9515

CHRISTIANI PLUMBING



Ken Christiani
 Master Plumber

6513 Southeast View
 Sugar Island
 Sault Ste. Marie, MI 49783

Home 906-635-0708
 Cell 231-881-0654
 Licensed & Insured

BRUNETT CONSTRUCTION

"We Do Quality Work Fast"

7441 E. 3 Mile Rd. David Brunett
 Sault Ste. Marie. Mi. 49783 (906) 635-7278
 License #2101097503 (906) 748-2626

WESTSHORE CONVENIENCE STORE

Phone 253-9514

Liquor Beer Wine
 Specialty orders available
 Grocery Drinks Snacks Schwan's Ice Cream
 Monday - Saturday 8am-8pm
 Sunday 9am-8pm

SMITH & COMPANY www.smith-company.com
 Real Estate Sault Ste. Marie MI. 49783 (906)632-9696



No need to pay for
 snow plowing while your away, call me and let me know
 your coming up and I will have it open., using 4 x 4
 tractor with blower and loader. Price upon request
 906-440-7389 Mike Gillhooley

THRIFTY Car Rental
 6016 S. Mackinaw Tr.
 Southwest Corner of 6 Mile 7 Mackinaw Tr.
 (906)636-0800



It's winter here in Michigan And the gentle breezes blow,
 Seventy miles an hour, At twenty five below.
 Oh, how I love ole Michigan when the snow's up to your butt.
 You take a breath of winter and your nose freezes shut.
 Yes, the weather here is wonderful so I guess I'll hang around.
 I could never leave my Michigan cause I'm frozen to the ground.



QUACKER STAFF

Classified Ads Dianne Myerscough 632-7403
 Circulation Dorothy Rich 635-9137
EDITOR LOUISE WILLIS 635-3152
 6572 S. Leading Light Ln.
 Sault Ste. Marie, Mi. 49783
 queenmumlou@wildblue.net

**FIRST PRIZE WINNER AT THE MONROE COUNTY SPORTSMAN'S CLUB
CHILE COOK-OFF!**

SUSAN WILLIS

creamy white chili

I got this wonderful recipe from my sister-in-law, who made a big batch and served a crowd one night. It was a hit. Plus, it's easy and quick, which is helpful since I'm a college student. In all my years of 4-H cooking, I've never had another dish get so many compliments.

YIELD: 7 servings.

1 pound boneless skinless chicken breasts, cut into 1/2-inch cubes

1 medium onion, chopped

1-1/2 teaspoons garlic powder

1 tablespoon vegetable oil

2 cans (15-1/2 ounces each) great northern beans, rinsed and drained

1 can (14-1/2 ounces) chicken broth

2 cans (4 ounces each) chopped green chilies

1 teaspoon salt

1 teaspoon ground cumin

1 teaspoon dried oregano

1/2 teaspoon pepper

1/4 teaspoon cayenne pepper

1 cup (8 ounces) sour cream

1/2 cup heavy whipping cream

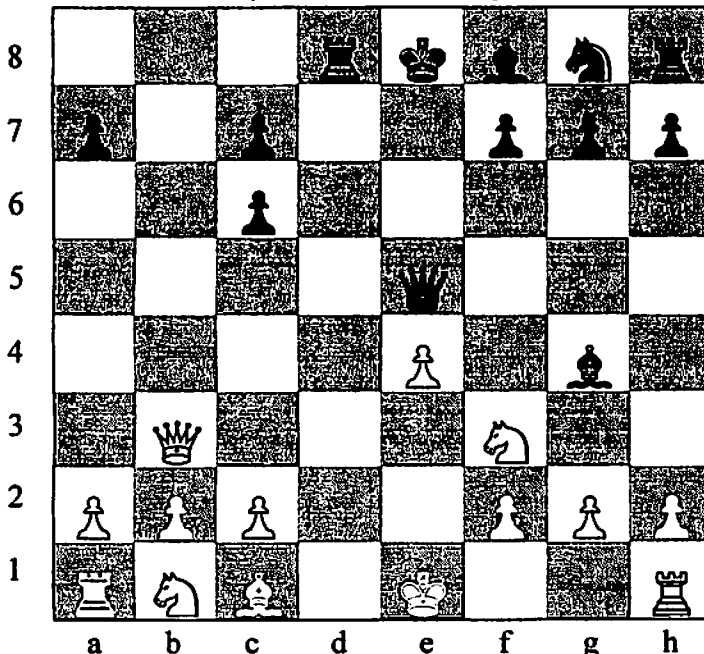
1 In a large saucepan, saute chicken, onion and garlic powder in oil until chicken is no longer pink. Add the beans, broth, chilies and seasonings. Bring to a boil. Reduce heat; simmer, uncovered, for 30 minutes. Remove from the heat; stir in sour cream and cream. Serve immediately.

Sugar Island Chess Klub

"SICK Chess for Sick Minds"

FIND THE MOVE—Should white's knight capture the black queen here?

Difficulty Level: Moderate/High

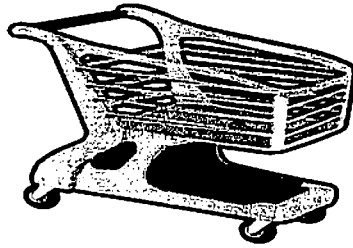


- ♔/♚ KING (K)—moves one square in any direction
- ♕/♖ QUEEN (Q)—moves any number of squares in any direction (on rows, columns, or diagonals)
- ♜/♞ ROOK (R)—moves any number of squares sideways, forward, or backward (on rows and columns, not diagonals)
- ♝/♗ BISHOP (B)—moves any number of squares on diagonals
- ♞/♘ KNIGHT (N)—moves in an "L" shape (2 squares one way and 1 the other) to a square of the opposite color. Knights are the only pieces that can jump over others.
- ♟/♙ PAWN—moves straight forward (cannot back up) 1 or 2 squares on the first move and then only 1 at a time. A pawn can capture only on the diagonal squares immediately in front of it. Pawns can become queens when they reach the 8th row. Pieces CAPTURE ("X") by running into and displacing others. A king is in CHECK ("+") when it is attacked. CHECKMATE occurs when a player cannot save the king from capture.

ANSWER:

♞-knight then captures the black queen with check, and then takes the bishop at g4. [1. QxT7+ KxT7 2.Nxg4+ Ke6 3.Nxg4] White should not capture the black queen yet. If the white knight captures at e5, black will checkmate white by moving the rook at d8 to d1, where the rook is protected by the bishop at g4 with the knight gone. [1. Nxe5 Rd1 mate] Instead, white should sacrifice its queen for the pawn at f7. The ♞-knight then captures the black queen with check, and then takes the bishop at g4. [1. QxT7+ KxT7 2.Nxg4+ Ke6 3.Nxg4]

WANT TO PLAY? JOIN US ON THURSDAYS AT 7:00 P.M. AT THE HILLTOP BAR



ED & ESTHER'S BAYVIEW STORE
5563 E. 3 Mile Rd.
SUGAR ISLAND
632-8857

We are now carrying many items to fill this basket! No need to run to town if you need something in a hurry. We are stocked with frozen meats, deli products, and some produce too! Be sure and check out our new clothing items!

LOTTERY * SLUSH PUPPIES
CAPPUCCINO'S * HAND DIPPED ICE CREAM
LIVE BAIT * DOLLAR AISLE * BEER/WINE
FISHING LICENSES * SNOWMOBILE TRAIL PERMITS

MONDAY-SATURDAY 9AM 8PM

SUNDAY 9AM-6PM



TIRED OF HIGH HEATING BILLS???????
DON'T BE CAUGHT OUT IN THE COLD

Have your furnace cleaned and checked now
before the real cold weather hits.

Whatever it takes:

11963 S. Homestead
Sault Ste. Marie, MI 49783

Todd Albert, Owner
Phone 906-632-6900

Heating & Cooling Systems



**CHEF PAUL AND ASSISTANT TAMMY
PRESENT THE MEALS IN FEBRUARY**

WEEK 1

Meal 1: Pork roast, baked or mashed potatoes
Mixed vegetables, applesauce cake

Meal 2: Spaghetti & meatballs
green beans/tossed salad, cherry pie

WEEK 2

Meal 1. Roast beef with gravy, mashed potatoes
peas/carrots, peach cobbler

Meal 2: Brats or Polish sausage, fried
onions, baked beans, sauer kraut
oven fries, pears

WEEK 3

Meal 1. Beef stew w/onions, carrots, potatoes,
Celery, coleslaw, pineapple upside down cake

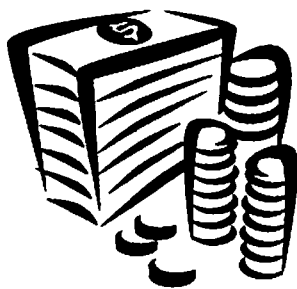
Meal 2. Sweet & Sour chicken or pepper
steak, rice, California blend, fruit
Cocktail

**MILK, BREAD AND BUTTER WILL BE OFFERED WITH EACH MEAL
Not only do you get a great meal, you get to socialize with your Island neighbors!**

Chippewa County:

- Sugar Island residents volunteered their time and their boats to help with a preserve cleanup at the remote Bailey-Lagerstrom Preserve.
- A brand new 1.3-mile trail system was created with the help of Drummond Island volunteers at the Williams Nature Preserve.

The Little Traverse Conservancy has been working as the oldest regional, non-profit land trust in Michigan. With the support of more than 4,100 members, the Little Traverse Conservancy works with private landowners and units of local government to voluntarily and permanently protect ecologically significant and scenic lands from development. Since it was founded, more than 39,000 acres and 105 miles of shoreline along our region's lakes, rivers, and streams have been set aside to remain in their natural state within Charlevoix, Cheboygan, Emmet, Mackinac, and Chippewa counties. For more information about the Conservancy, call 231.347.0991



TAXES DUE: FEBRUARY 28, 2009

**Sugar Island Treasurer, Tica Janiga will be
at the Community Center from
9:00am-5:00pm
to receive your payments**



Saturday

February 14, 2009

*VALENTINE'S
DAY*

Dinner at the Community Center

FEATURING

PRIME RIB

BAKED POTATO

SALAD AND DESSERT

BEVERAGE

\$10.00 each

Children under 7 \$5.00

Sponsored by the Sugar Island Fest

Committee